



**2 Bed
Apartment
located in**

£675,000

ORLANDO REID



ORLANDO REID
LONDON

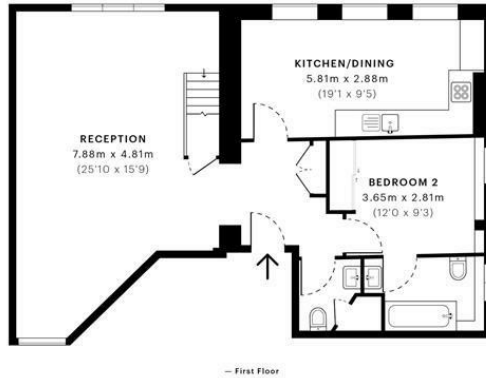


Charlotte Court, SE1

CAPTURE DATE: 30/07/2021 LASER SCAN POINTS: 3,827,675

GROSS INTERNAL AREA

103.91 sqm / 1118.48 sqft



	GROSS INTERNAL AREA (GIA) The footprint of the property 103.91 sqm / 1118.48 sqft		NET INTERNAL AREA (NIA) Excludes walls and structural features Includes mezzanines, restricted head height 97.86 sqm / 1053.36 sqft		EXTERNAL STRUCTURAL FEATURES Balconies, terraces, verandas etc. 0.00 sqm / 0.00 sqft		RESTRICTED HEAD HEIGHT Limited use area under 1.8m 0.00 sqm / 0.00 sqft
--	--	--	---	--	---	--	--



Spec Verified floor plans are produced in accordance with Royal Institution of Chartered Surveyors' Property Measurement Standards. Plots and gardens are illustrative only and excluded from all area calculations. Due to rounding, numbers may not add up precisely. All measurements shown for the individual room lengths and widths are the maximum points of measurements captured in the scan.

IPW 3B RESIDENTIAL: 105.30 sqm / 1133.44 sqft
 IPW 3C RESIDENTIAL: 99.62 sqm / 1072.30 sqft
 spec id: 61026419b19120e5eac625

Energy Efficiency Rating		Current	Potential
Very energy efficient - lower running costs			
(92 plus)	A		
(81-91)	B		
(69-80)	C		
(55-68)	D		
(39-54)	E		
(21-38)	F		
(1-20)	G		
Not energy efficient - higher running costs			
England & Wales		EU Directive 2002/91/EC	

DIRECTIONS

CONTACT

1-3 Old Town
 Clapham
 London
 SW4 0JT

E: lettings@orlandoreid.co.uk
 T: 020 7627 3197
www.orlandoreid.co.uk

